

1225

TNEA CODE

Loyola Institute of Technology

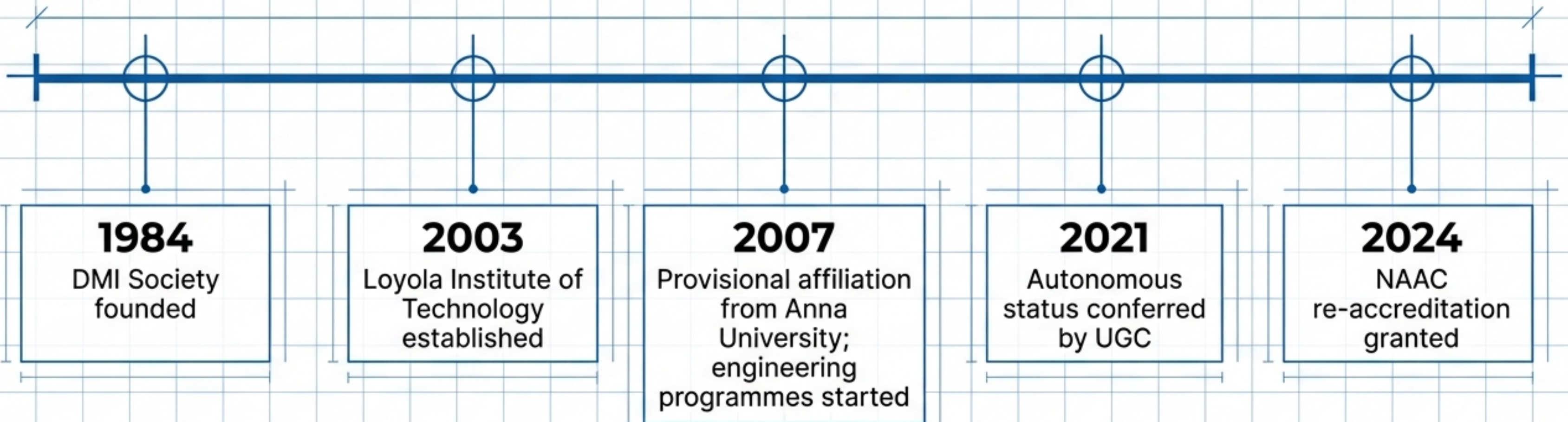
Short Name:	LIT
City:	Chennai (Palanchur)
Institution Type:	Private Self-Financing — Christian Minority Institution
Year Established:	2003
Affiliated University:	Anna University, Chennai
Admission Route:	TNEA (Tamil Nadu Engineering Admissions) — Government quota 65% + Management quota 35%
Gender Profile:	Boys and Girls



Founder: Rev. Dr. Fr. J. E. Arulraj

Trust: Society of Daughters of Mary Immaculate and Collaborators (DMI Foundation)

Providing technical education to marginalised, oppressed, and disadvantaged sections of society.



AICTE Status

Approved — Extension of Approval granted for AY 2025–26

NAAC Status

Accredited — Grade A (CGPA 3.11) | Valid until: 20 September 2029

NBA Status (Program-wise)

Program Name	Accreditation Status
Artificial Intelligence and Data Science	[]
Computer Science and Engineering	[]
Computer Science and Engineering (Cyber Security)	[]
Information Technology	[]
Electronics and Communications Engineering	[]
Electrical and Electronics Engineering	[]
Mechanical Engineering	[]

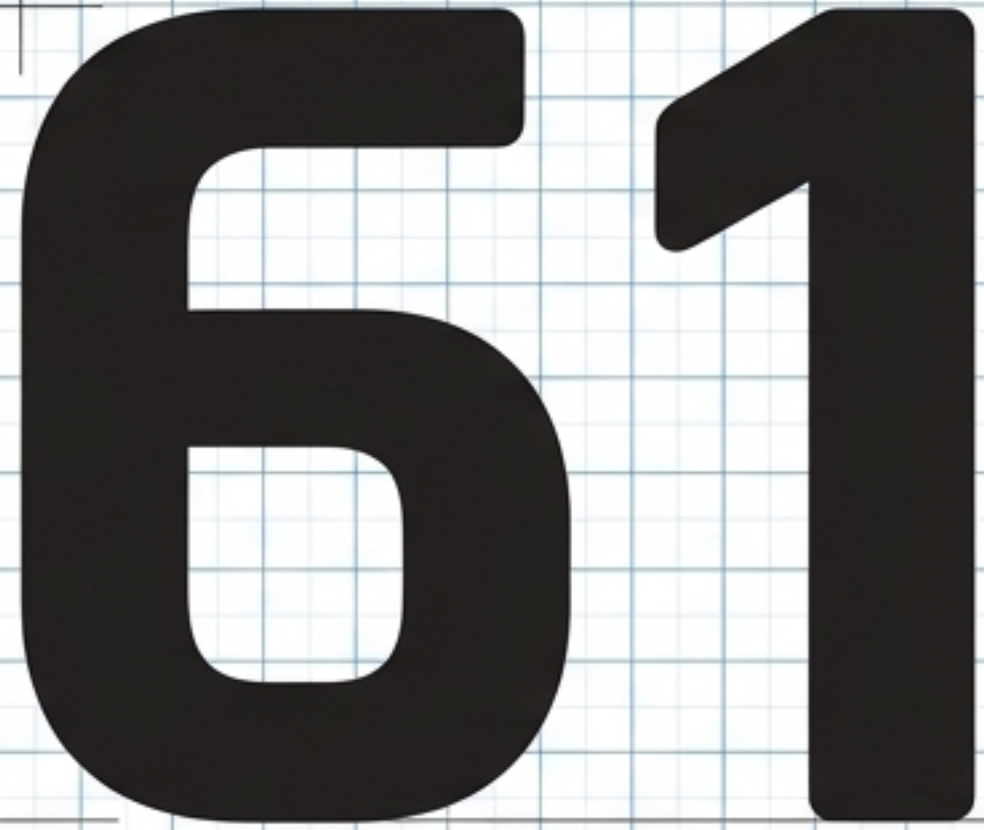
RANKING CATEGORY

NIRF Innovation Ranking (2023)

Rank Band 151–300

Branch	Code	Intake	Year Started	NBA Status
Artificial Intelligence and Data Science	AD	120	2022 (New-Age Branch) ◆	[]
Computer Science and Engineering (Cyber Security)	SC	60	2023 (New-Age Branch) ◆	[]
Computer Science and Engineering	CS	120	2007	[]
Information Technology	IT	120	2006	[]
Electronics and Communications Engineering	EC	60	2003	[]
Electrical and Electronics Engineering	EE	30	2003	[]
Mechanical Engineering	ME	30	2007	[]

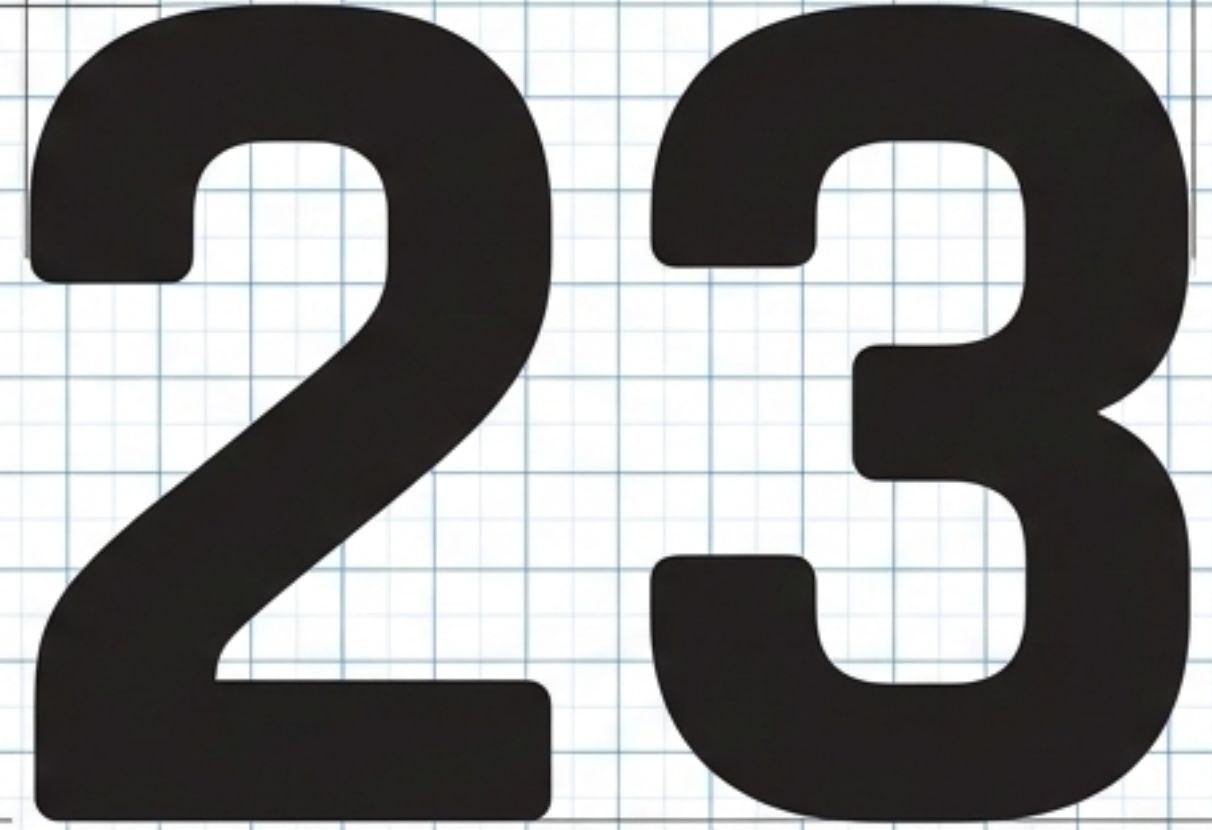
Total sanctioned intake: 540



61

The number '61' is rendered in a large, bold, black font. It is surrounded by dimension lines: a vertical line on the left indicates the height, and a horizontal line at the top indicates the width. The background is a light blue grid.

**TOTAL ENGINEERING
FACULTY (FULL-TIME)**

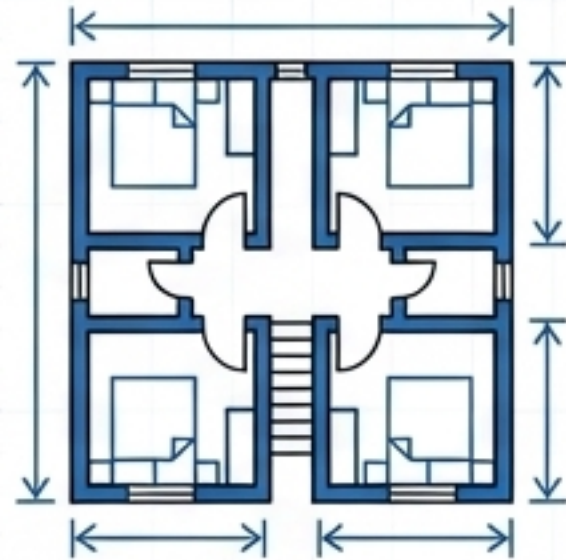


23

The number '23' is rendered in a large, bold, black font. It is surrounded by dimension lines: a vertical line on the left indicates the height, and a horizontal line at the top indicates the width. The background is a light blue grid.

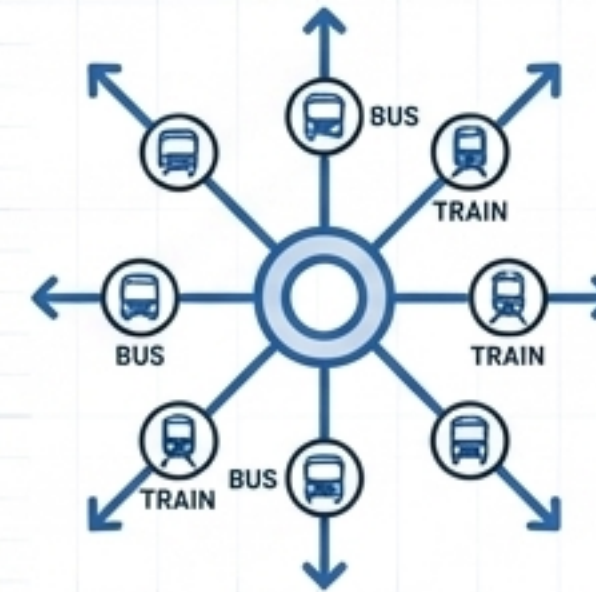
**FACULTY WITH PHD
QUALIFICATION**

Hostel Facilities



- Boys' hostel available (permanent construction)
- Girls' hostel available (permanent construction)

Transport & Connectivity



- College-operated bus fleet available.
- Public bus routes accessing the area: **MTC 202, 253, 53, 578, 591.**
- Nearest Railway Station: Avadi (Approximately 20 km).

SC/ST Tuition Fee Scholarship

Available to eligible SC/ST students meeting income and academic criteria.

BC/MBC Scholarship

Available to eligible BC/MBC students meeting government eligibility norms.

Post-Matric Scholarship for Minorities

Available to eligible minority community students meeting income norms.

EBC Scholarship

Available to eligible Economically Backward Class students.

Centres of Excellence

IBM Artificial Intelligence and IoT
MSME Industrial Automation
CISCO Networking
VM Ware – ICT Academy
Ethical Hacking – Equinox
Pristine Info Solutions
MHRD National Cyber Safety & Security Standards Resource Centre
MHRD Remote Centre Virtual Labs
Member Open Power Foundation (USA)

Industry MOUs /Partnerships

IBM
MSME
CISCO
VMware
NSIC
TATTI
Equinox

Patents (2021–2023)

30

Published

13

Granted

**Positioned in Rank
Band 151-300**

**NIRF Innovation Ranking,
Ministry of Education,
Government of India (2023)**

**Grand Finale
Participation**

**Smart India Hackathon,
Ministry of Education / AICTE,
Government of India (2024)**

**STARTUP TamilNadu
Host Institution**

Government of Tamil Nadu

**MSME Host Institution
for Business Incubator**

**Ministry of Micro, Small and
Medium Enterprises,
Government of India**

Information sourced from the college's official website, TNEA portal, and government data sources as available at time of preparation. Verify with official portals before admission decisions.

Explore more engineering colleges at profsam.com — your trusted guide for 12th to engineering admissions.